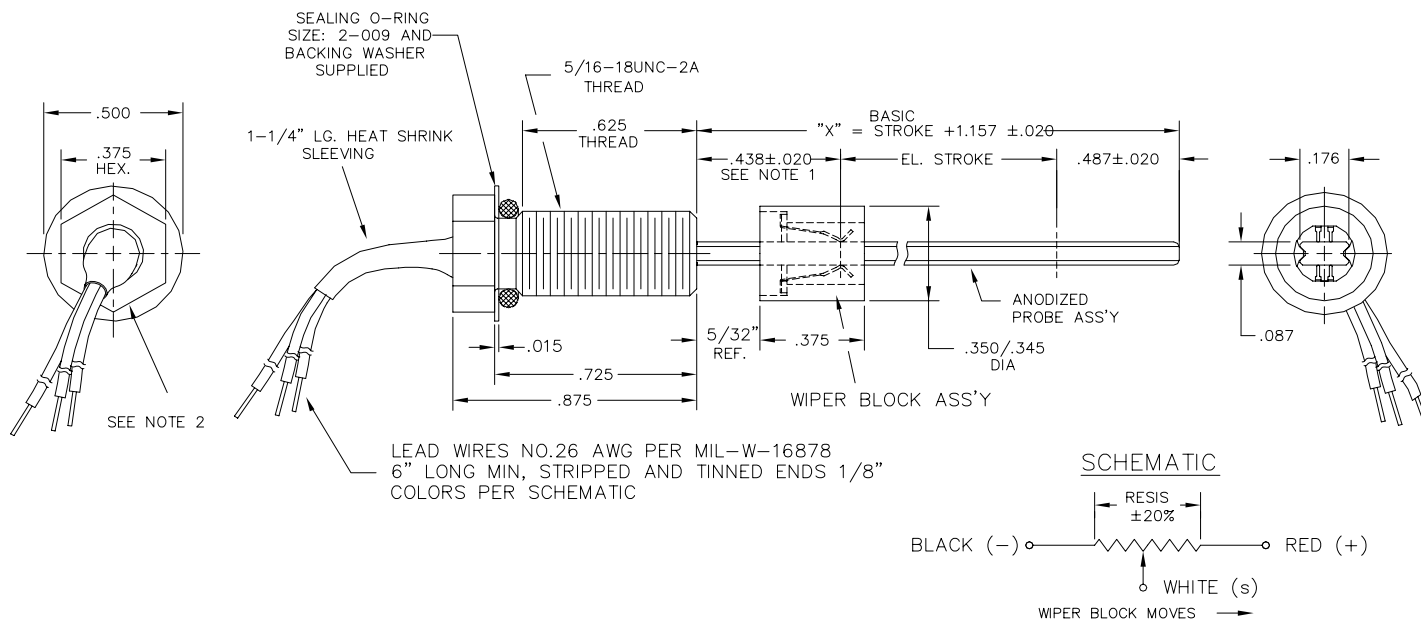




LINEAR MOTION PRECISION POTENTIOMETERS

MODEL 140

Internal Position Sensor



ORDERING INFORMATION

Model Number	140- X - X - 1PB
Stroke & Resistance	Standard header = 1
	Linearity A = 1.0%,

SPECIFICATIONS

ELECTRICAL

Resistance Range ±20%	1.0KOhms/inch
Linearity	To ±1.0% (Depending on Stroke)
Electrical Stroke	to 24 inches (±0.232)
Mechanical Travel	0.040 inch minimum (Each End)
Power Dissipation	1 Watt/inch @ 25°C
Temperature Range	-25°C to 150°C
Stroke Velocity	Hydraulic = 20inches/sec Pneumatic = 50inches/sec

NOTES

- (1) This dimension defines the position of the wiper assembly at the full in (-) position
- (2) Optional custom mechanical flange configurations available upon request
- (3) High pressure electrical feed-thru fittings available upon request

* See **OPTIONAL Electrical Characteristics**

* See **OPTIONAL Mechanical Characteristics**