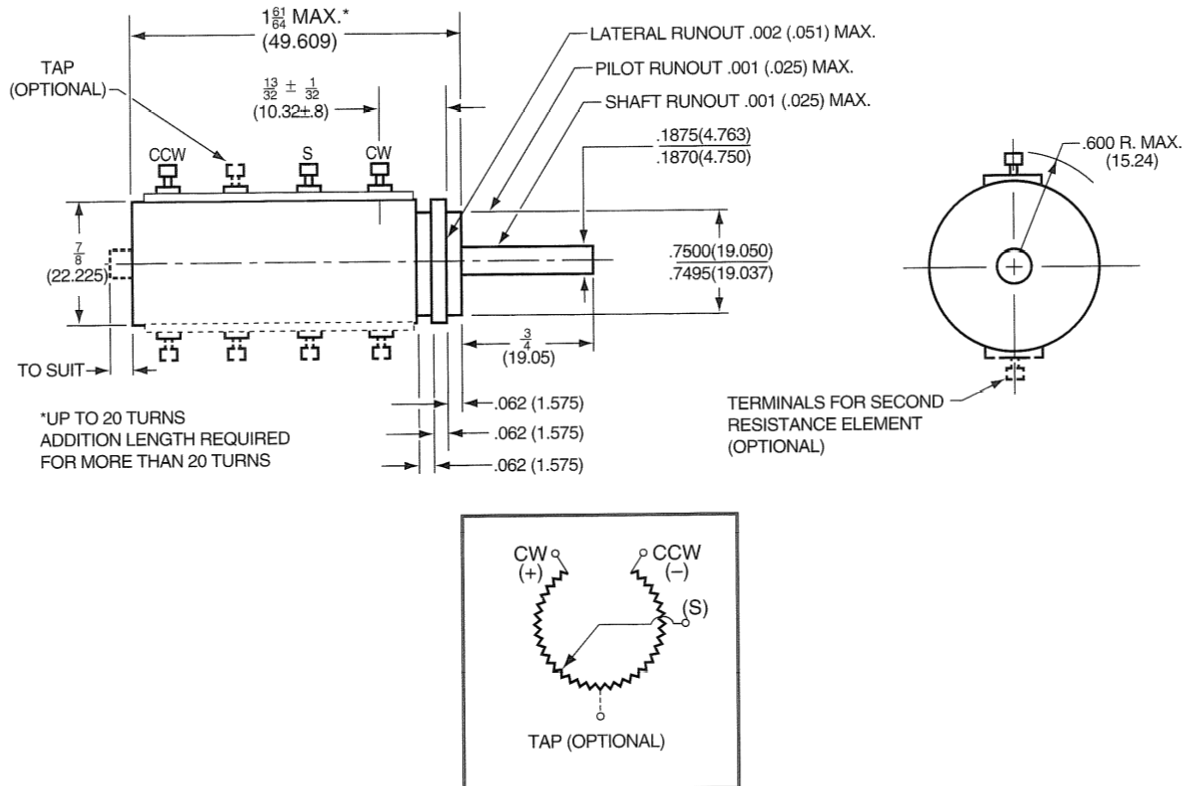


ROTARY PRECISION POTENTIOMETERS

MODEL 7810

CONDUCTIVE PLASTIC, MULTI-TURN



SPECIFICATIONS

ELECTRICAL

Resistance Range ±10%	1KOhms to 125KOhms
Independent Linearity or Conformity	±0.5% to 0.1%
Electrical Function Angle ±40°	3600°
Number of Taps *	1/10 Turns
Power Dissipation (@ 25°C)	1 Watt
Temperature Range	-55°C to 125°C
Dielectric Strength	500V RMS

* See **OPTIONAL Electrical Characteristics**

MECHANICAL

Mechanical Rotation	3700° Min
(Stops Available)	
Starting Torque (Max)	1.5in-oz
Weight (Max)	
Single Element	1.75oz
Additional Element	0.125oz
Stop Strength	10in-oz
End Play	0.005in (Max)
Moment of Inertia	0.025gmc ²

* See **OPTIONAL Mechanical Characteristics**

-- An Electromotive Solutions Company --

2800 ANVIL STREET NORTH • ST. PETERSBURG, FL 33710 USA • PHONE: (727) 347-2181 • Fax: (727) 347-7520